

Twin shaft paddle mixer



Application

The twin shaft paddle mixer is extremely suitable for fast and homogeneous mixing of:

- dry solid powders;
- solids with liquid additions;
- dry solid powders with minor ingredients.
- pellets and crumbs with fluids like oil or fat for coating purposes.

In this case the rotating speed of the mixer will be adjusted.

Operation

The paddle mixer can complete mixes in a very short time, some even less than 15 seconds. Batches are thoroughly mixed within 15 seconds, depending on product.

The paddle mixer will operate fully automatic when a charging hopper is connected to the top and a receiving hopper to the bottom of the mixer.

Construction

- Strong, attractively-styled housing with large inspection doors.
- The rotor shaft is supported by self-aligning ball bearings.
- Double shaft with fitted paddles.
- Pneumatically-operated bomb doors.

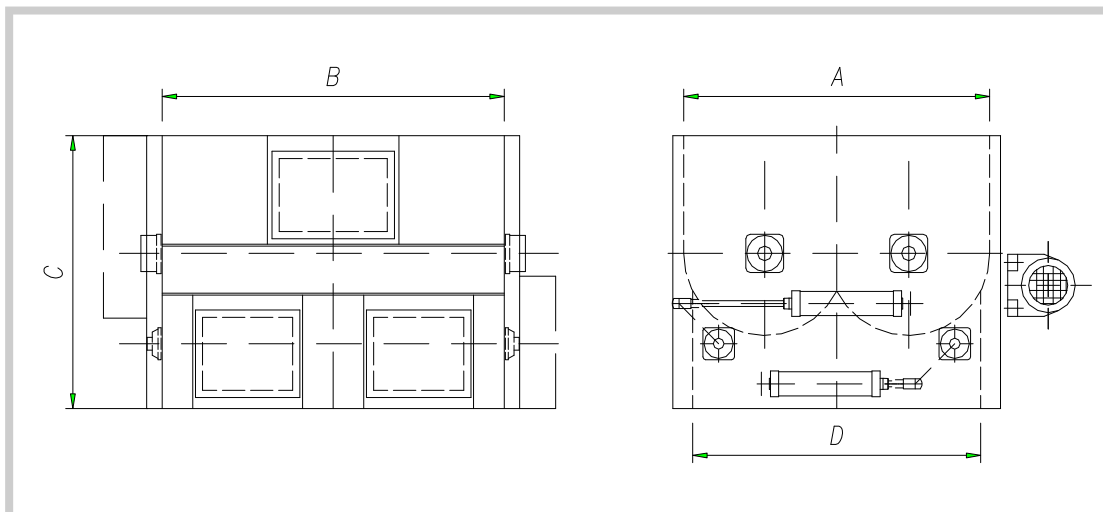
Optional extras

- Stainless steel 304 or 316, or a combination of these.
- Injection nozzles for max. 5% liquids.
- Limit switches on the inspection doors.
- Heating plus insulation.
- Variable speed.

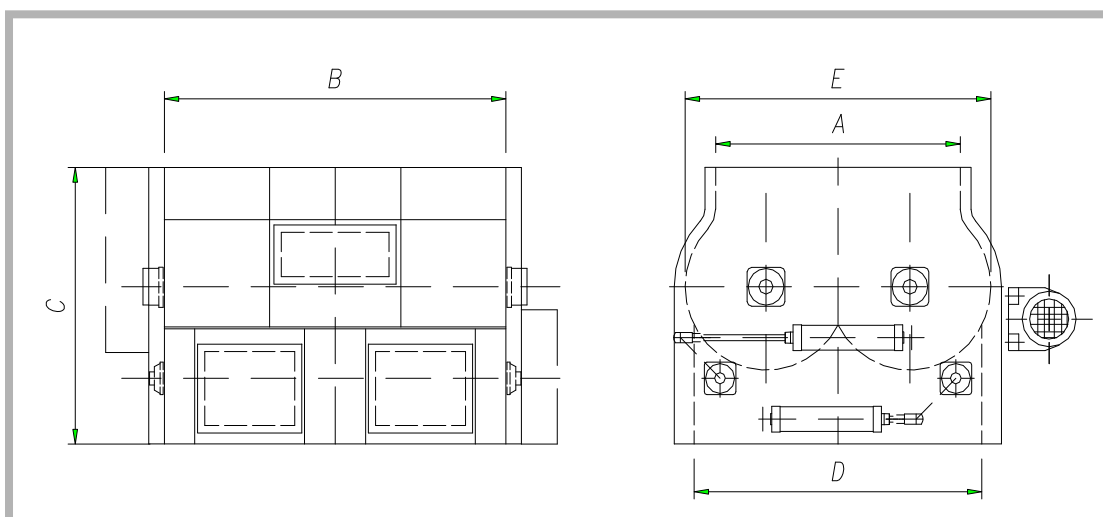
Benefits

- Batches up to 4000 ltr.
- Very short mixing periods.
- Suitable for almost all ingredients.
- A high degree of homogeneity without product degradation.
- Excellent spreading of liquids.
- Gentle handling, live bottom bins.
- Moveable weigher.
- High accuracy dosing.
- Truck standing in position dust-free, weather protected.





Type	Capacity Ltr	A	B	C	D	Motor kW	Weight kg
PDK-05	500	1250	1400	1200	1150	7,5	1250
PDK-10	1000	1550	1800	1400	1450	15	2400
PDK-15	1500	1700	2000	1500	1600	18,5/22	3050



Type	Capacity Ltr	A	B	C	D	E	Motor kW	Weight kg
PDK-20	2000	1600	2300	1950	1900	2000	22/30	3960
PDK-30	3000	1700	2700	2200	2280	2300	37	5800
PDK-40	4000	1800	2900	2300	2400	2500	45	6800