

Drum cleaner



Application

The cleaner is specially designed for pre-cleaning of dry solid products in bulk handling technologies. Directly placed downstream to a pneumatic recipient filter, a crane and grab system or truck intake hopper. The removes impurities like stone, wood, iron, paper, plastic, etc.

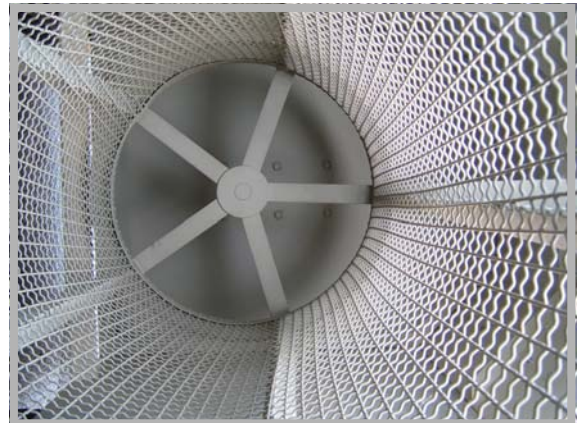
By using this system, conveyors and production machines are protected against technical breakdown and damage.

Operation

The product runs through the feeding spout into the sieve drum. By continuous rotation of the slanting sieve drum the material is sieved through the screen. At the same time impurities are discharged at the end of the drum.

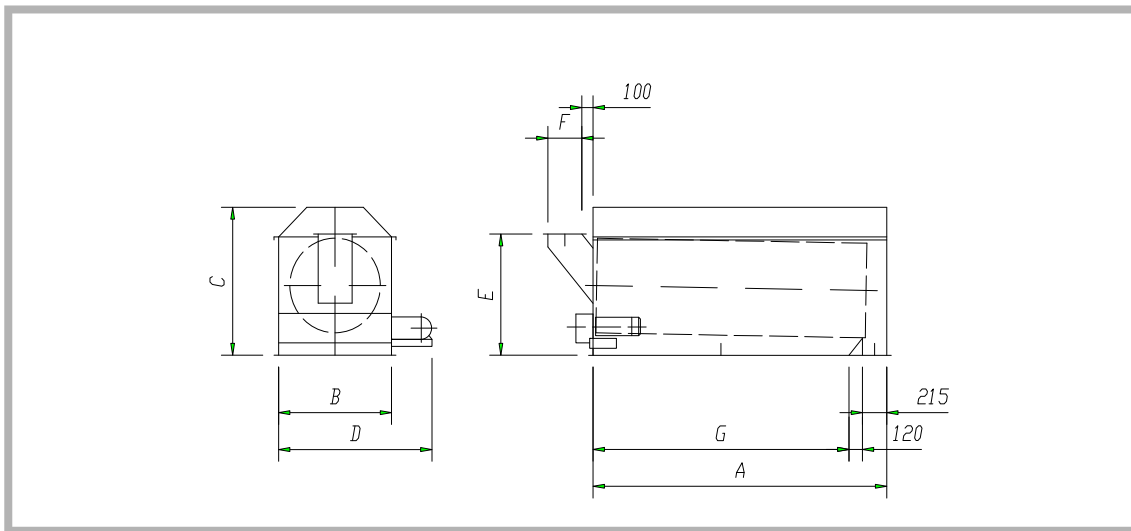
Features

- Totally enclosed dustfree housing
- All steel construction
- No external moving parts
- External drive system
- Large screen area



Benefits

- High capacities in compact design
- Small drive source
- Long lasting efficiency
- Possibility for dust suction
- Minimum maintenance



Type	Cap. [m ³ /h]	Weigt [kg]	Shipp. Vol. [m ³]	A	B	C	D	E	F	G	H.P.
TRE-60	60	570	3,6	2000	1000	1250		1015	300	1660	2,2
TRE-100	100	580	4,2	2600	1000	1250	1380	1025	300	2265	2,2
TRE-150	150	630	5,3	2600	1200	1375	1500	1150	400	2265	3