

# Shot-blasting Machine type GH-1 with Rubberbelt



## Application

The GH-1 type machine was designed to clean the surface of cast, forged and pressed parts in bulk.

## Technical description

The GH-1 type shot-blasting machine is mainly used for the cleaning of cast, forged and pressed parts in bulk.

The equipment has one turbine type ABR 380. The turbine is a 6-blade construction of axial, gravity abrasive supply. It is equipped with a mechanical pre-accelerator, having exact blast-jet direction adjustment.

The parts to be cleaned can be placed onto rubberbelt manually or with the help of a hydraulic loader.

The work-pieces in the blasting space roll on each other with the rubberbelt revolving. In the meantime the blast material cleans their whole surface.

The quantity of abrasive material and the blast time can be adjusted continuously to get optimal surface cleaning. There is an option to adjust the revolt number of the wheel. The speed of the shot material can be decreased or increased by changing the revolt speed of the wheel.

The inner walls of the blasting cabinet are protected by means of highly wear resistant manganese steel coverplates.

Blasting can only take place with the front door in closed position, this provides total protection against undesired abrasive leakage into the workshop space.

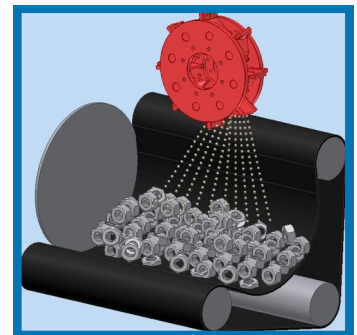
The closed and continuous circulation of the abrasive material is ensured by a screw, a bucket elevator, an abrasive cleaning unit and a feeder tank.

The clean parts can be discharged from the blasting cabinet by simply changing the direction of the belt drive.

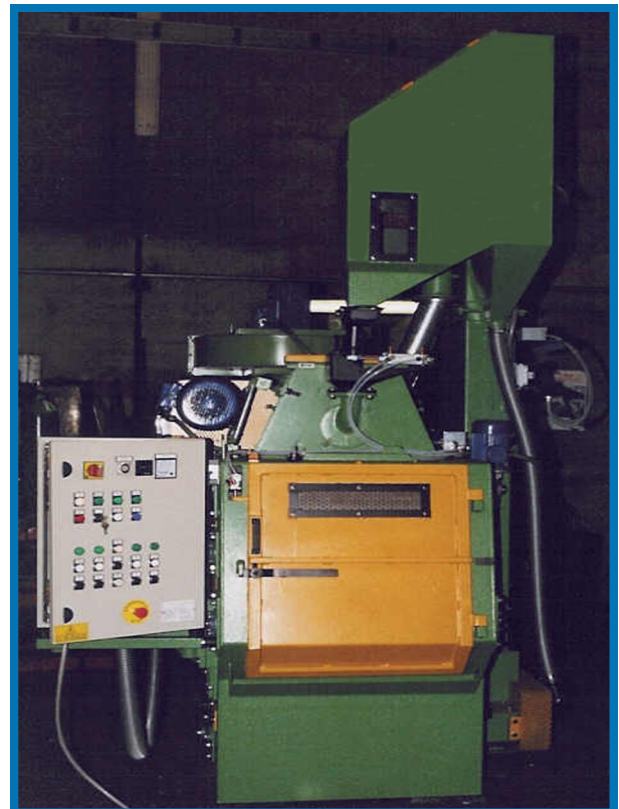
To aspirate and separate the dust created by shot-blasting, we can supply cartridge type dust filter c/w fan, silencer and ductwork.

The equipment can be operated by means of central electrical control box.

## Blasting pattern

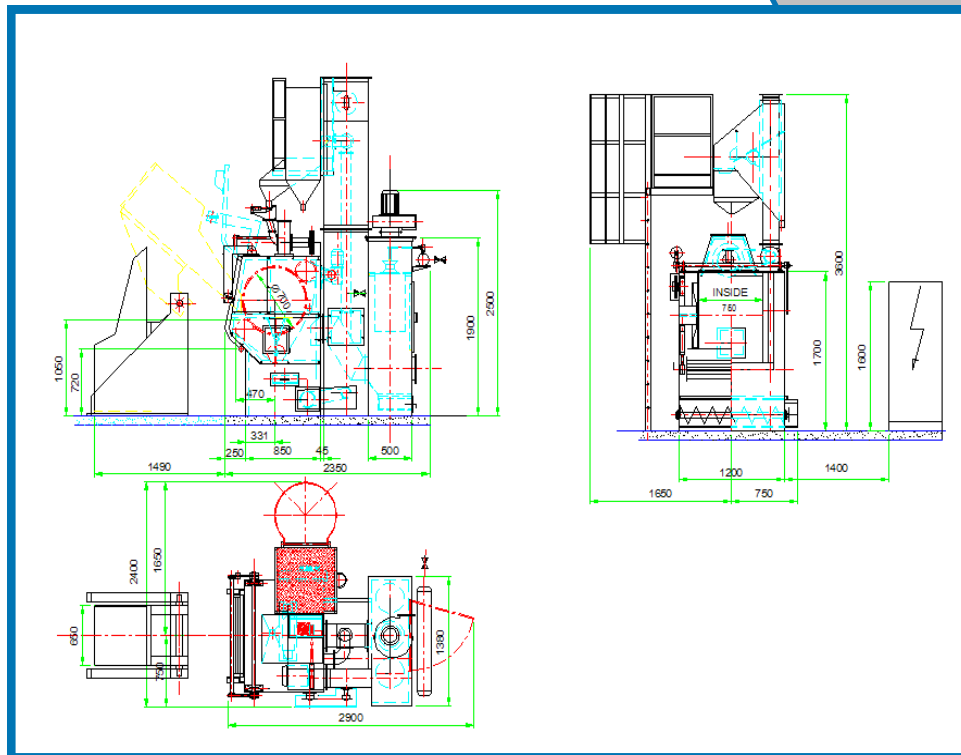


## GH-1





## Measure print /GH-1/



## Technical data

Rubberbelt		Rubberbelt			
	Drum diameter			mm	700
	Belt width			mm	750
<b>Turbine</b>	Number			Pc.	1
	Type				ABR-380
	Wheel diameter			mm	380
	Wheel speed			RPM	2600
	Abrasive capacity			kg/min	110
	Turbine motor power	Turbine motor power		kW	5,5
<b>Volume of content</b>	Load capacity			kg	200
<b>Part weight</b>	Electrical	Machine		kW	7
	Compressed air	Pressure		bar	6
		Quantity		m <sup>3</sup> /h	6
<b>Abrasive charge</b>				kg	250
<b>Recommended abrasive size</b>				mm	0,4-1,2
<b>Exhaust fan power</b>				m <sup>3</sup> /h	2500
<b>Electrical data</b>		Voltage		V	3 x 400
		Control voltage		V	220
		Cycle		Hz	50