

CST-1200

Tube and Gas Cylinder Cleaner Shot-blasting Machine



Application

The CST-1200 shot-blasting machine is mainly suitable for continuous cleaning and descaling the outer surface of tubes, gas cylinders and other cylindrical work-pieces.

Technical description

The equipment has 2 pieces of ABR-500 type blasting turbines. The turbines are located over the transport plane of the roller conveyor. Blast cleaning happens in a parallel plane with proceeding direction.

The turbines are of gravity abrasive feeding ones, having mechanic accelerator, control cage and 8 blades to ensure an accurate abrasive jet direction adjustment opportunity.

The chamber internal surfaces in access of the active abrasive jet are covered with highly abrasion-resistant manganese steel plate, while other surfaces are protected with thick wear resistant rubber cover.

At the inlet and outlet cross sections of the machine housing wear resistant rubber curtains protect against shots leaving the machine.

The continuous and closed flow loop of abrasive is assured by a collecting hopper with screw, bucket elevator, air classifier abrasive cleaning unit, dosing unit and turbines.

During cleaning process the work-piece has straight line proceeding movement and rotates around its own axis in the same time. This movement is provided by a special diabolic roller conveyor. All of the rollers are driven. Faster operation of the machine can be reached by automatic loader and unloader unit optionally.

To exhaust and filtrate the created dust during blast-cleaning we supply an APSZ type cartridge filter c/w fan and suitable ductwork.

The air leaving filtration system has less dust content than 3 mg/m^3 .

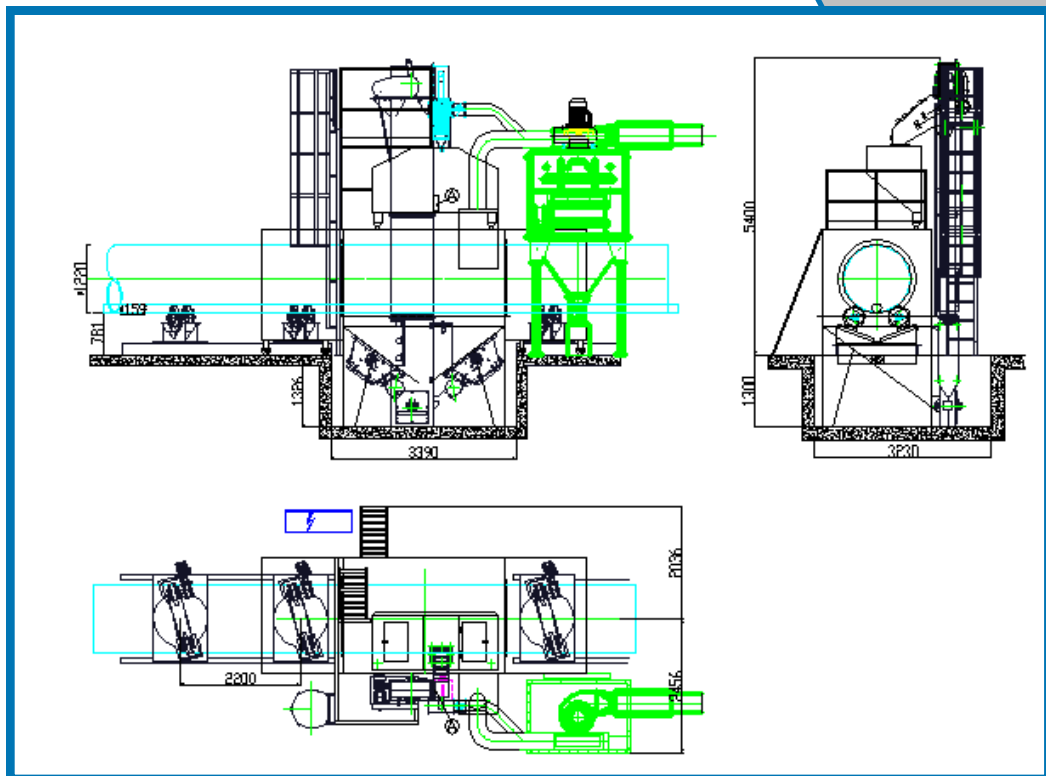
A central control board will be supplied for controlling all functions of the machine.

Normal operation shall be carried out in automatic set position, however there is hand operation option also provided for service functions.

CST-1200



Measure print /CST-1200/



Technical data

Minimal work-piece diameter	mm	200	
Min. work-piece length	mm	5000	
Maximal work-piece diameter	mm	1200	
Turbines	Quantity	db	2
	Type	ABR -D 500	
	Wheel diameter	mm	500
	Wheel speed	1/min	2900
	Abrasive capacity / turbine	Kg/min	130-300
Roller conveyor	Load capacity	Kg/m	800
	Speed (adjustable)	m/min	0-4
Energy demand (at minimal performance)			
Electrical	Machine	kW	50
	Aspiration	kW	7,5
Compressed air	Pressure	bar	Min. 6
	Quantity	m ³ /h	14
Abrasive charge	Kg	1500	
Suggested abrasive size	mm	0,4-1,6	
Aspiration capacity	m ³ /h	6000	
Electrical data	Voltage	V	3*400
	Control voltage	V	230
	Cycles	Hz	50