

AH-2 tumbling belt type shot-blasting machine



Application

The AH-2 type machine was designed to clean the surface of cast, forged and pressed parts in bulk.

Technical description

The AH-2 type shot-blasting machine is mainly used for the cleaning of cast, forged and pressed parts in bulk.

The equipment has two turbines type ABR 380. The turbines are 6-blade construction of axial, gravity abrasive supply. These are equipped with a mechanical pre-accelerator, having exact blast-jet direction adjustment.

The parts to be cleaned can be placed onto tumble belt manually or with the help of a hydraulic loader.

The work-pieces in the blasting space roll on each other by the tumbling revolution. In the meantime the blast material cleans their whole surface.

The quantity of abrasive material and the blast time can be adjusted continuously to get optimal surface cleaning. There is an option to adjust the revolution speed of the turbines. The speed of the shot material can be decreased or increased by changing the revolution speed of the turbines.

The inner walls of the blasting cabinet are protected by means of highly wear resistant manganese steel cover plates.

Blasting can only take place with the front door closed position, this provides total protection against undesired abrasive leaking into the workshop space.

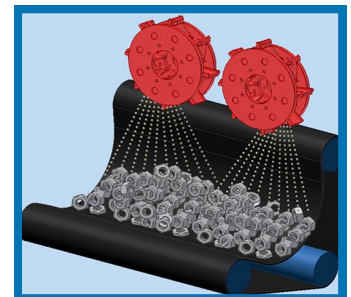
The closed and continuous circulation of the abrasive material is ensured by a screw conveyor, a bucket elevator, an abrasive cleaning unit and a feeder tank.

The clean parts can be discharged from the blasting cabinet by simply changing the direction of the tumbling drive.

To aspirate and separate the dust created by shot-blasting, we can supply cartridge type dust filter radial fan, silencer and ductwork.

The equipment can be operated by means of central electrical control box.

Blast pattern

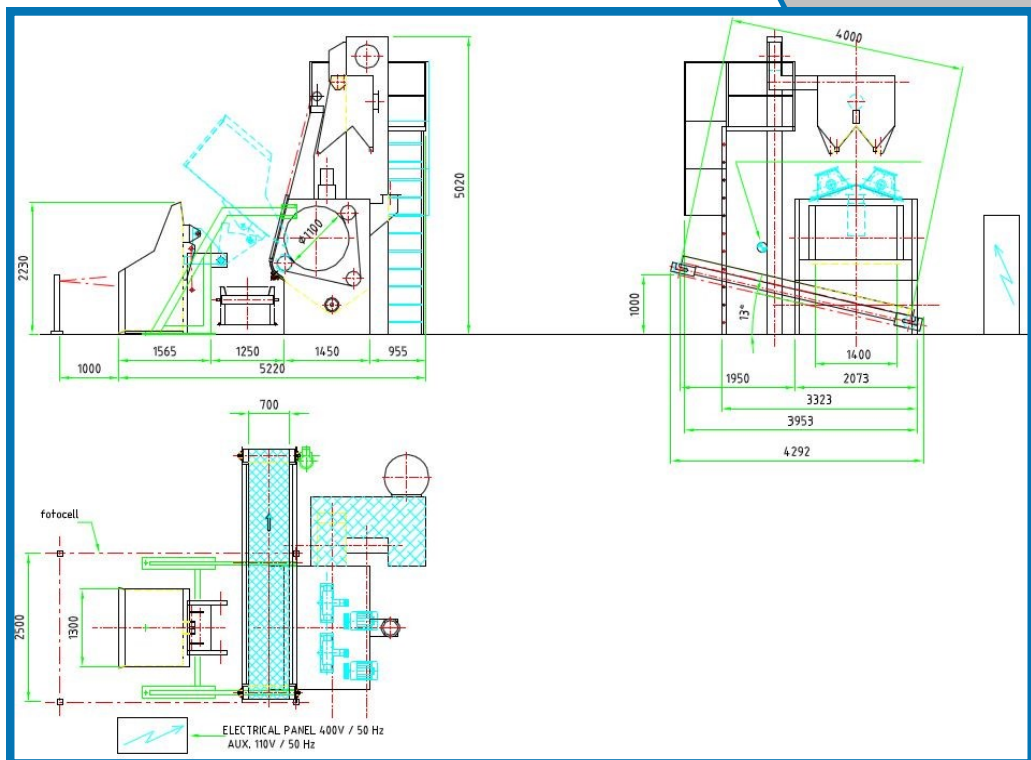


AH-2





Dimensions /AH-2/



Technical data

Tumbling belt	Disc diameter	mm	1100	
	Belt width	mm	1400	
Turbines	Number	pc	2	
	Type		ABR-380	
	Diameter	mm	380	
	Revolution speed	RPM	2600	
	Abrasive flow rate	kg/min	230	
	Turbine performance	kW	15 /turbine	
Work piece	Bulk load	kg	1600	
Supplies	Electrical	Machine	kW	39,5
		Aspiration	kW	5,5
	Compressed air	Pressure	bar	6
		Flow rate	m ³ /h	9
Abrasive load		kg	1000	
Proposed abrasive size		mm	0,4-1,2	
Aspiration airflow		m ³ /h	7000	
Electricity	Voltage	V	3 x 400	
	Control voltage	V	110	
	Frequency	Hz	50	