

Single shaft paddle mixer



Application

The single-shaft paddle mixer was developed for the below applications:

- mixing/stirring dry, solid mealy products;
- mixing liquid in bulk solid products, maximum 8% liquid;
- mixing micro-components into dry, solid products;
- coating pellets/kibbles or crumbs with liquids.

In this case the speed of the machine must be adjusted to the parameters of the product.

Operation

The mixing time of the paddle mixer is very short, in some cases it is so low as 90 seconds. The mixing time of the batches varies between 90 seconds and 2 minutes (product-specifically).

The single-shaft paddle mixer is also suitable for fully automated operation with using the proper pre- and after bins.

Construction

- Teardrop shaped mixer trough
- Robust, settling-free shaft with adjustable mixing paddles
- Dynamically balanced rotor
- Gear motor mounted directly on the rotor shaft
- Bomb door operated by pneumatic cylinders for opening the entire bottom of the machine
- It is simple to replace all wear parts

Optional extras

- Weighing execution by means of supporting load-cells
- Stainless steel outfit
- Inner surfaces covered with teflon

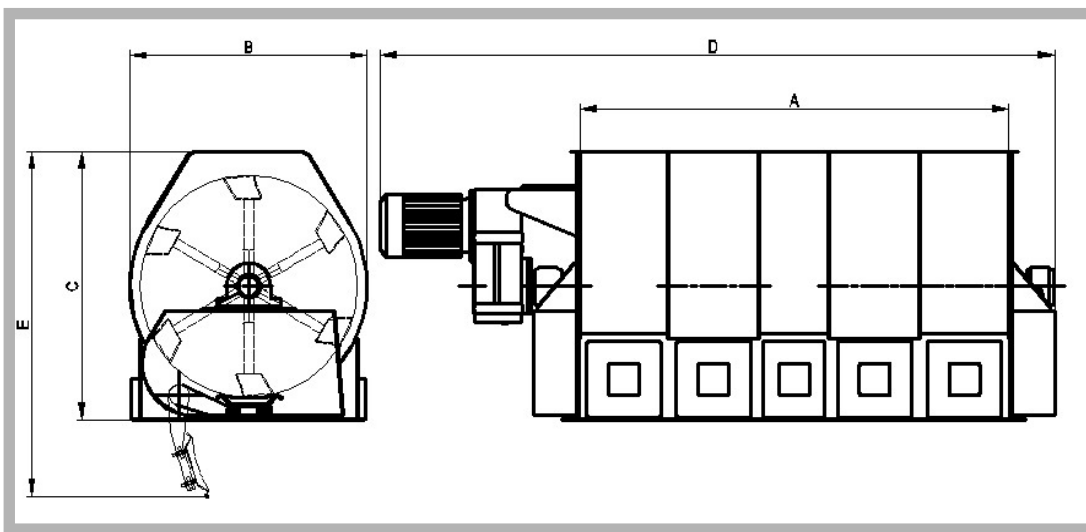
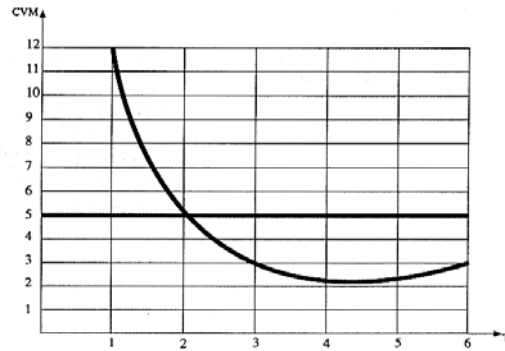


Advantages

- Very high (5% CV @ 10 ppm) homogeneity in short mixing time
- Entire bottom discharge
- Low maintenance

Homogeneity

Please, see the variation co-efficient (CV %) in relation to the mixing time (s) in case of 1:100000 indicator dosing.



| Type | Litre | kW | A | B | C | D | E |
|----------|-------|----|------|------|------|------|------|
| ALK-2001 | 2000 | 22 | 1850 | 1120 | 1310 | 3200 | 1680 |
| ALK-3001 | 3000 | 30 | 2776 | 1536 | 1700 | 4370 | 2185 |
| ALK-4001 | 4000 | 45 | 3700 | 2050 | 2300 | 5600 | 2916 |

Measures in mm

